

Light efficiency:



Light quality:



Color temperature:



Output: 1746 lm

Peak: 7434 cd

Power: 91.3 W

PF: 0.99



Tracking number: [n/a](#)

Product name:

ElectraPix Bar 16

Item number:

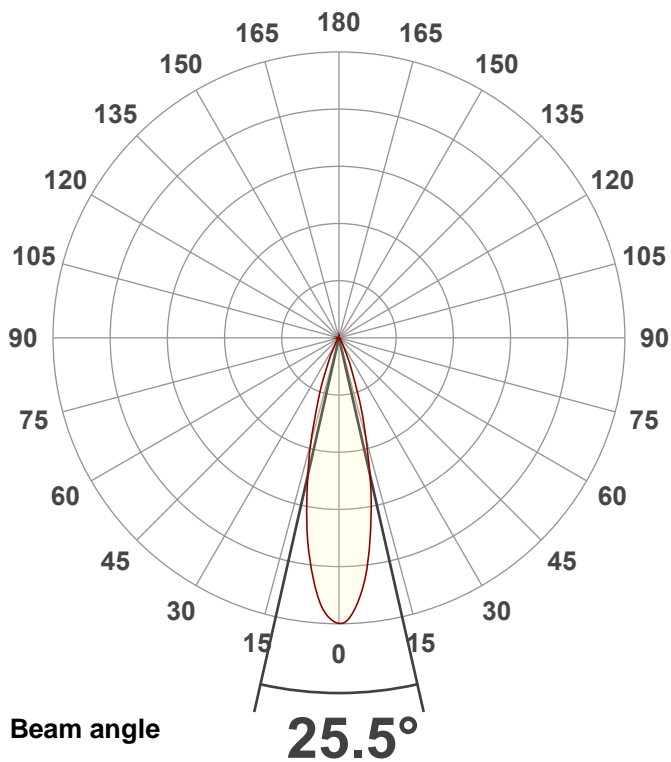
8000K

Date and time:

8/29/2024 11:35:45 AM

Description:

@ 178

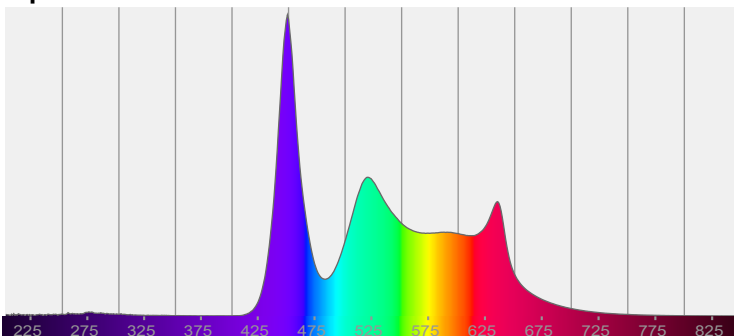


CIE 1931

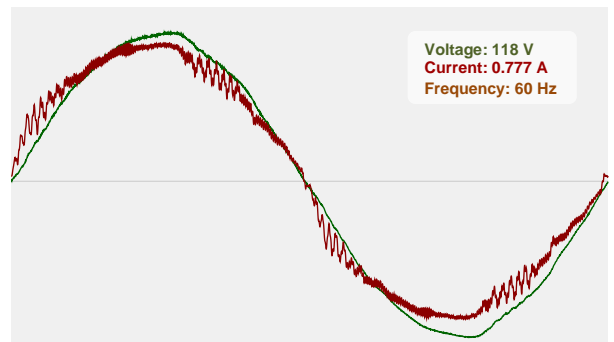
x: 0.296

y: 0.303

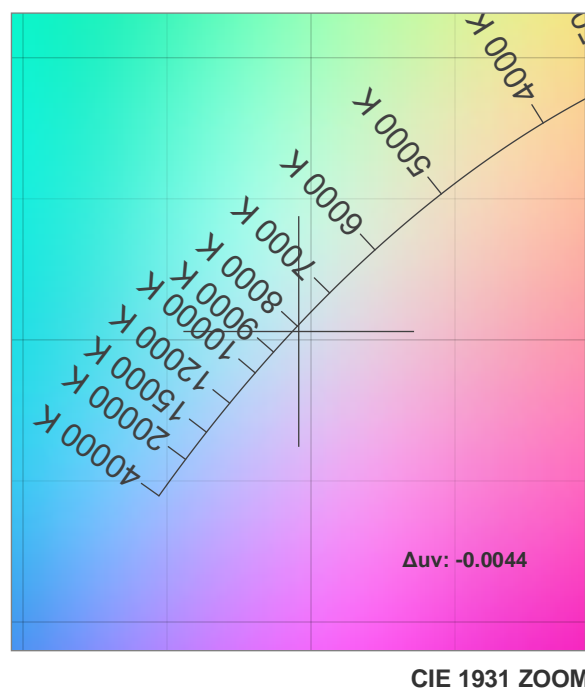
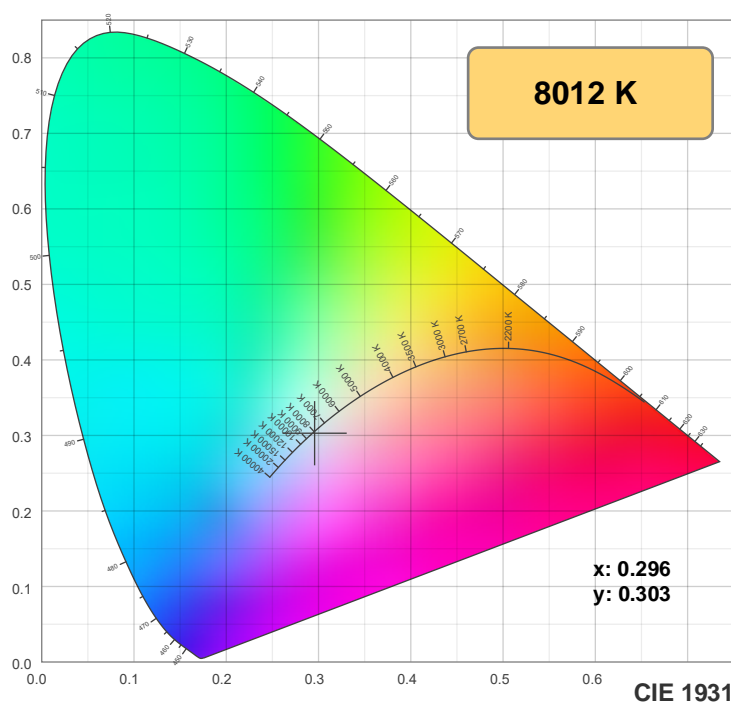
Spectra



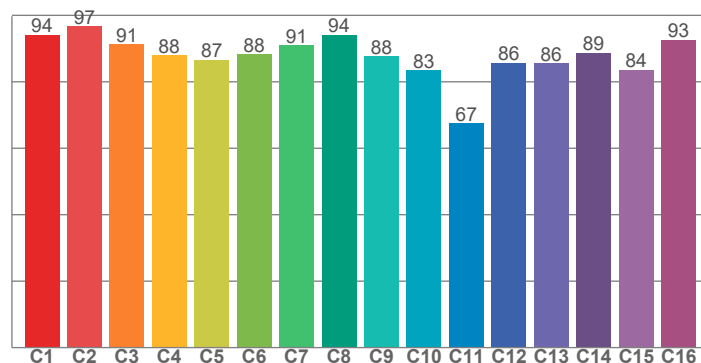
Power



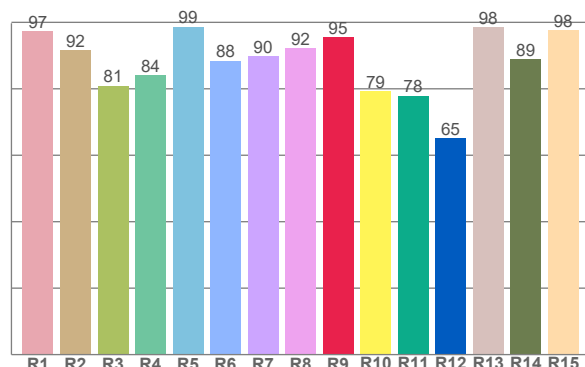
Color details



TM-30: 87.9



CRI: 90.4 (R1-R8)



CRI R values, only R1-R8 are used to calculate final CRI value

R1	R2	R3	R4	R5	R6	R7	R8	R9	R10	R11	R12	R13	R14	R15
97.2	91.7	80.9	84.0	98.7	88.5	89.7	92.2	95.4	79.3	77.9	65.2	98.5	88.9	97.5

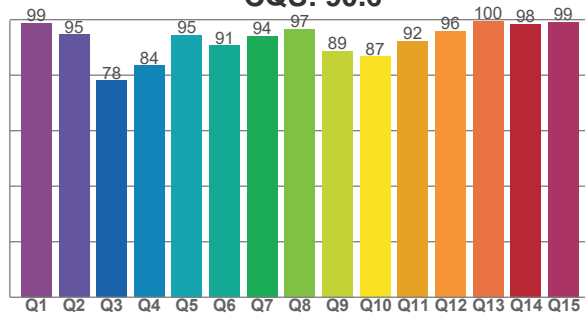
TM30 C values, 16 binned values out of total of 99 C values

C1	C2	C3	C4	C5	C6	C7	C8	C9	C10	C11	C12	C13	C14	C15	C16
94.1	96.7	91.3	88.1	86.6	88.3	91.0	94.1	87.7	83.5	67.4	85.8	85.6	88.7	83.7	92.7

CQS Q values

Q1	Q2	Q3	Q4	Q5	Q6	Q7	Q8	Q9	Q10	Q11	Q12	Q13	Q14	Q15
98.9	94.7	78.2	83.6	94.5	90.6	94.1	96.6	88.6	86.8	92.3	96.0	99.5	98.5	99.1

CQS: 90.6



Color parameters

Color temperature	Color rendering index	Red component	Color fidelity	Color gamut	Color quality scale	Color coordinate cie 1931	Color coordinate cie 1931	Color coordinate	Color coordinate	Color deviation from black body
CCT	CRI	CRI R9	TM30 Rf	TM30 Rg	CQS	x	y	u	v	Δuv
8012 K	90.4	95.4	87.9	105.2	90.6	0.296	0.303	0.196	0.301	-0.0044

TM-30 details

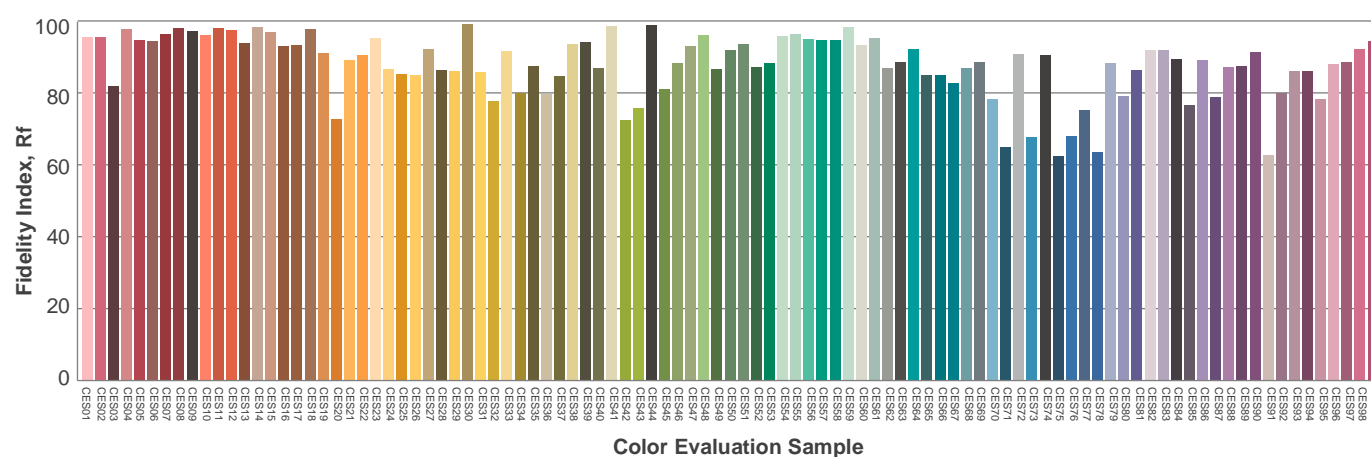
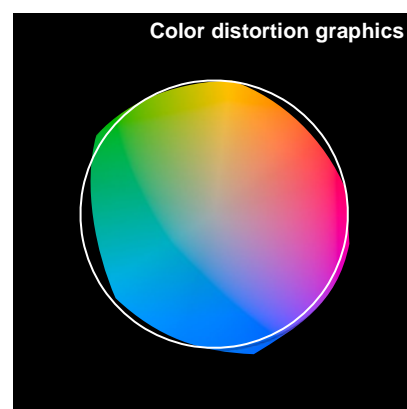
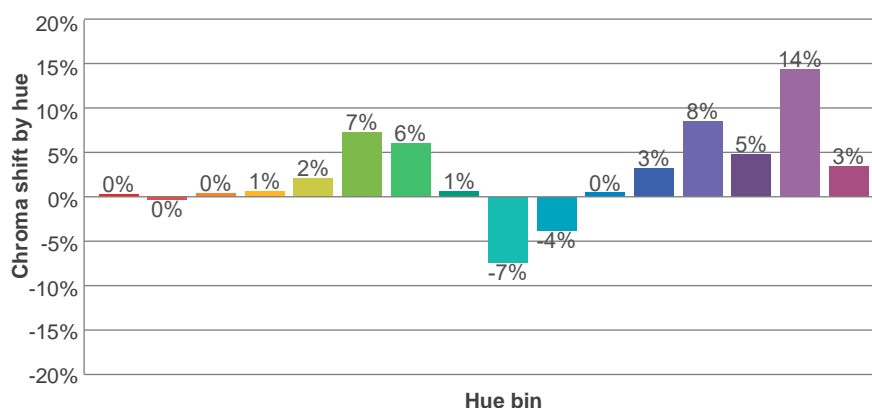
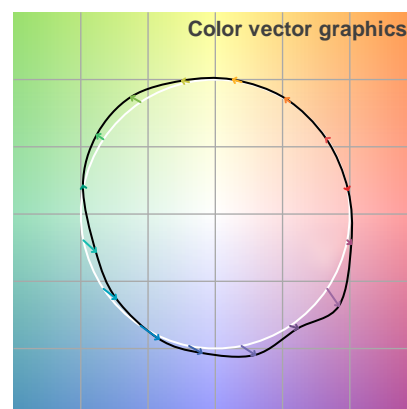
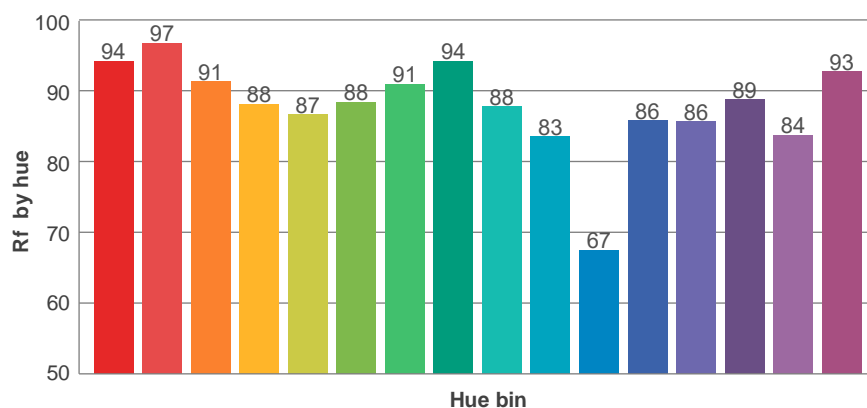
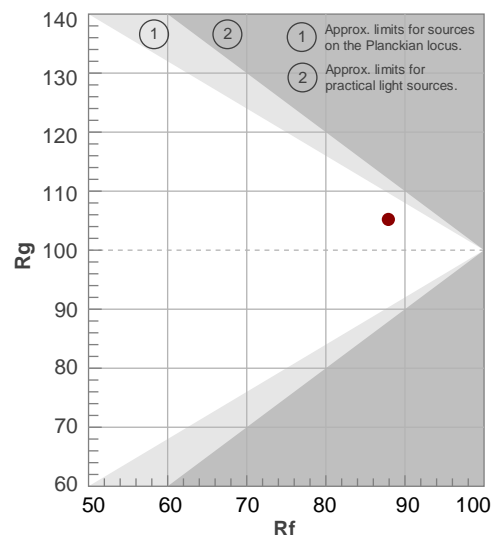
Rf 87.9

Fidelity index Rf

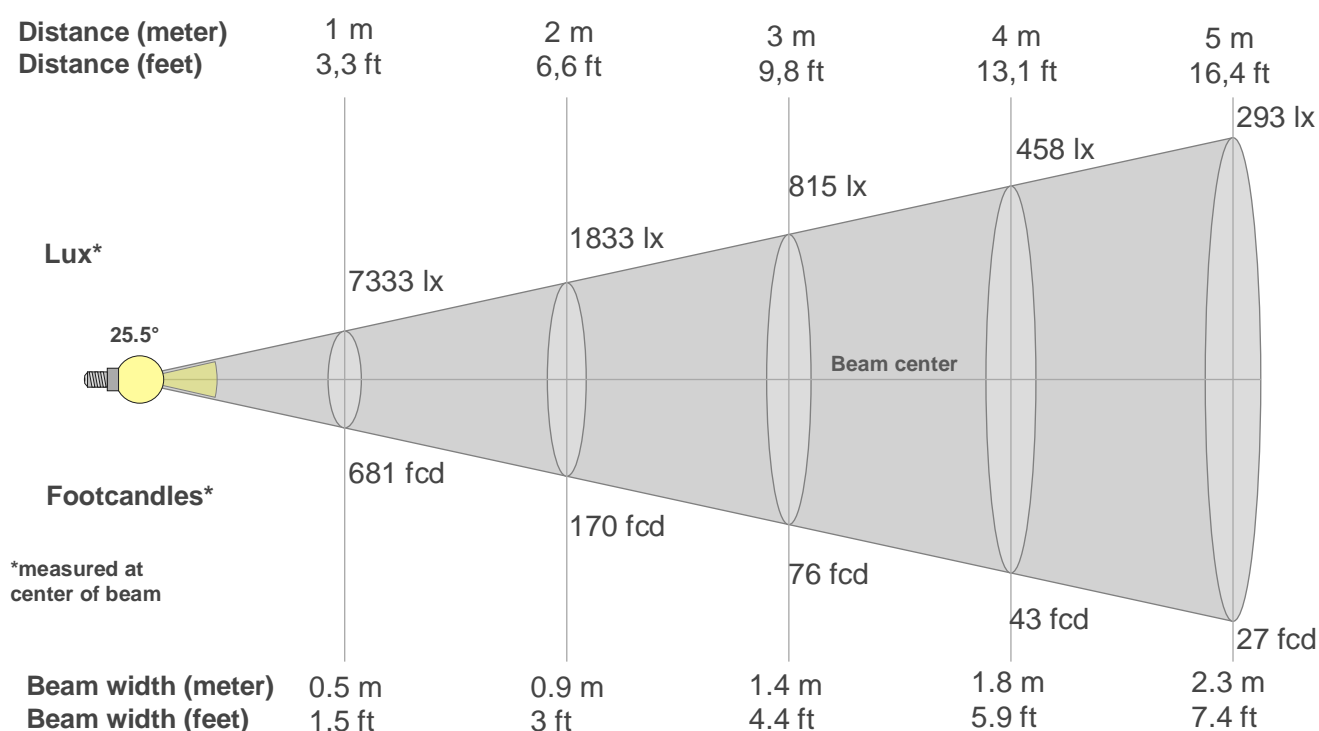
Rg 105.2

Gamut index Rg

Hue Bin	Ri	Shifts (%)	
		Chroma	Hue
1	94	0%	-2%
2	97	0%	1%
3	91	0%	4%
4	88	1%	7%
5	87	2%	5%
6	88	7%	4%
7	91	6%	0%
8	94	1%	-2%
9	88	-7%	10%
10	83	-4%	11%
11	67	0%	17%
12	86	3%	10%
13	86	8%	9%
14	89	5%	4%
15	84	14%	-6%
16	93	3%	-2%



Beam details



Beam intensities from 1-20m

1m	2m	3m	4m	5m	6m	7m	8m	9m	10m	11m	12m	13m	14m	15m	16m	17m	18m	19m	20m
3.3ft	6.6ft	9.8ft	13.1ft	16.4ft	19.7ft	23ft	26.2ft	29.5ft	32.8ft	36.1ft	39.4ft	42.7ft	45.9ft	49.2ft	52.5ft	55.8ft	59.1ft	62.3ft	65.6ft
7333lx	1833lx	815lx	458lx	293lx	204lx	150lx	115lx	91lx	73lx	61lx	51lx	43lx	37lx	33lx	29lx	25lx	23lx	20lx	18lx
681.2fcd	170.3fcd	75.7fcd	42.6fcd	27.2fcd	18.9fcd	13.9fcd	10.6fcd	8.4fcd	6.8fcd	5.6fcd	4.7fcd	4fcd	3.5fcd	3fcd	2.7fcd	2.4fcd	2.1fcd	1.9fcd	1.7fcd

Intensities in 0° c-plane

0°	2°	4°	6°	8°	10°	12°	14°	16°	18°	20°	22°	24°	26°	28°	30°	32°	34°	36°	38°
7333	7274	6821	6368	5620	4822	4022	3221	2420	1837	1293	855	613	371	269	193	135	112	88	77
100%	99%	93%	87%	77%	66%	55%	44%	33%	25%	18%	12%	8%	5%	4%	3%	2%	2%	1%	1%

Intensities in 90° c-plane

0°	2°	4°	6°	8°	10°	12°	14°	16°	18°	20°	22°	24°	26°	28°	30°	32°	34°	36°	38°
7333	7274	6821	6368	5620	4822	4022	3221	2420	1837	1293	855	613	371	269	193	135	112	88	77
100%	99%	93%	87%	77%	66%	55%	44%	33%	25%	18%	12%	8%	5%	4%	3%	2%	2%	1%	1%

Intensities in 180° c-plane

0°	2°	4°	6°	8°	10°	12°	14°	16°	18°	20°	22°	24°	26°	28°	30°	32°	34°	36°	38°
7333	7176	6944	6284	5624	4857	4031	3229	2555	1882	1390	997	638	471	305	211	155	105	87	69
100%	98%	95%	86%	77%	66%	55%	44%	35%	26%	19%	14%	9%	6%	4%	3%	2%	1%	1%	1%

Intensities in 270° c-plane

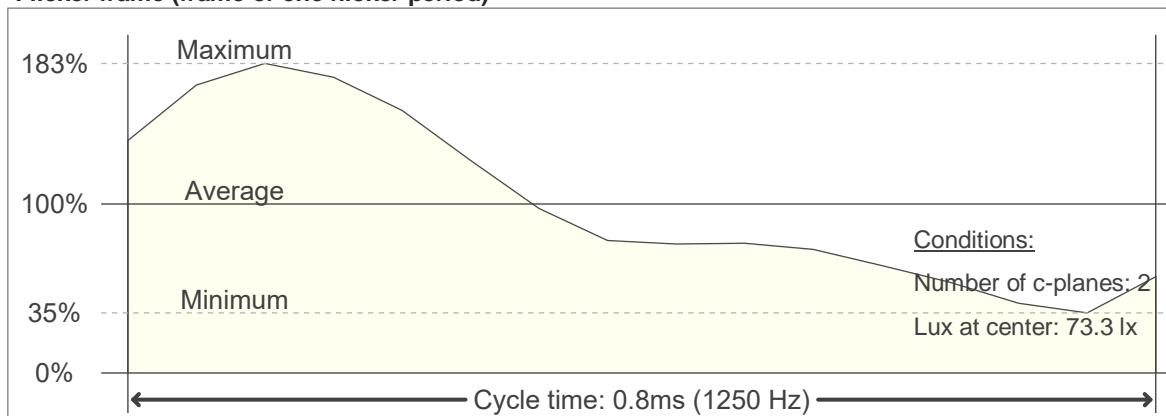
0°	2°	4°	6°	8°	10°	12°	14°	16°	18°	20°	22°	24°	26°	28°	30°	32°	34°	36°	38°
7333	7176	6944	6284	5624	4857	4031	3229	2555	1882	1390	997	638	471	305	211	155	105	87	69
100%	98%	95%	86%	77%	66%	55%	44%	35%	26%	19%	14%	9%	6%	4%	3%	2%	1%	1%	1%

Beam angle 50%	Field angle 10%	Cutoff angle 2,5%	Intensity ratio in 120° cone	Intensity ratio in 90° cone
25.5°	46.2°	61.1°	98.8%	96.4%

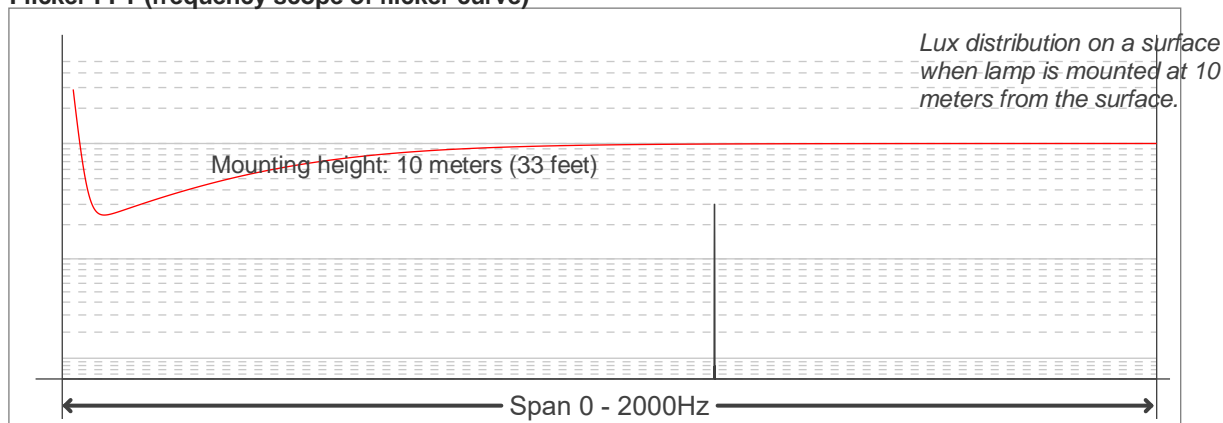
Flicker

Flicker curve (complete sampled flicker signal)

Flicker frame (frame of one flicker period)



Flicker FFT (frequency scope of flicker curve)



Flicker results:

Flicker frequency:		1250 Hz	
Flicker index:	0.22	JA8/10 40Hz	0.05 %
Flicker percentage:	68.93 %	JA8/10 90Hz	0.08 %
SVM: (Visual flicker)	0.61	JA8/10 200Hz	0.19 %
PstLM	0.04	JA8/10 400Hz	0.58 %
Mp	0.03	JA8/10 1000Hz	6.44 %

Flicker conditions:

Sample rate:	20000 samples/second
--------------	----------------------